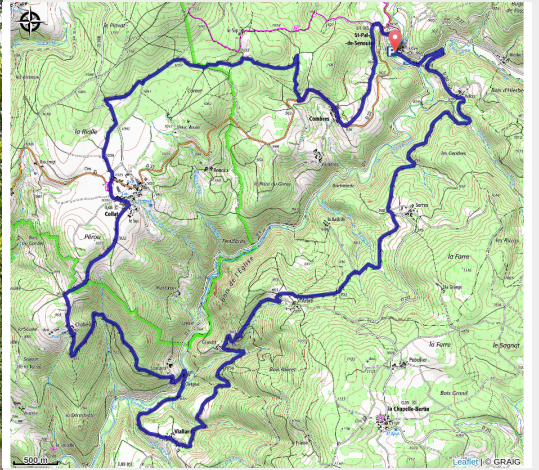


La vallée de la Senouire

Velay - Saint-Pal-de-Senouire



(MAZET_OT)



Useful information

Practice : Mountain Bike

Length : 23.2 km

Trek ascent : 711 m

Difficulty : Medium

Type : Loop

Themes : VTT

Trek

Departure : Saint-Pal-de-Sénoire

Arrival : Saint-Pal-de-Sénoire

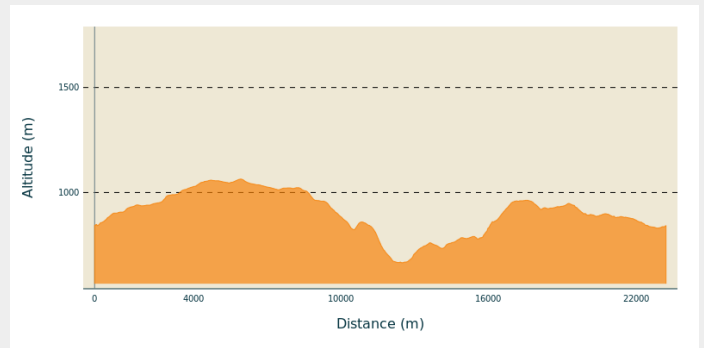
Cities : 1. Saint-Pal-de-Sénoire

2. Collat

3. Josat

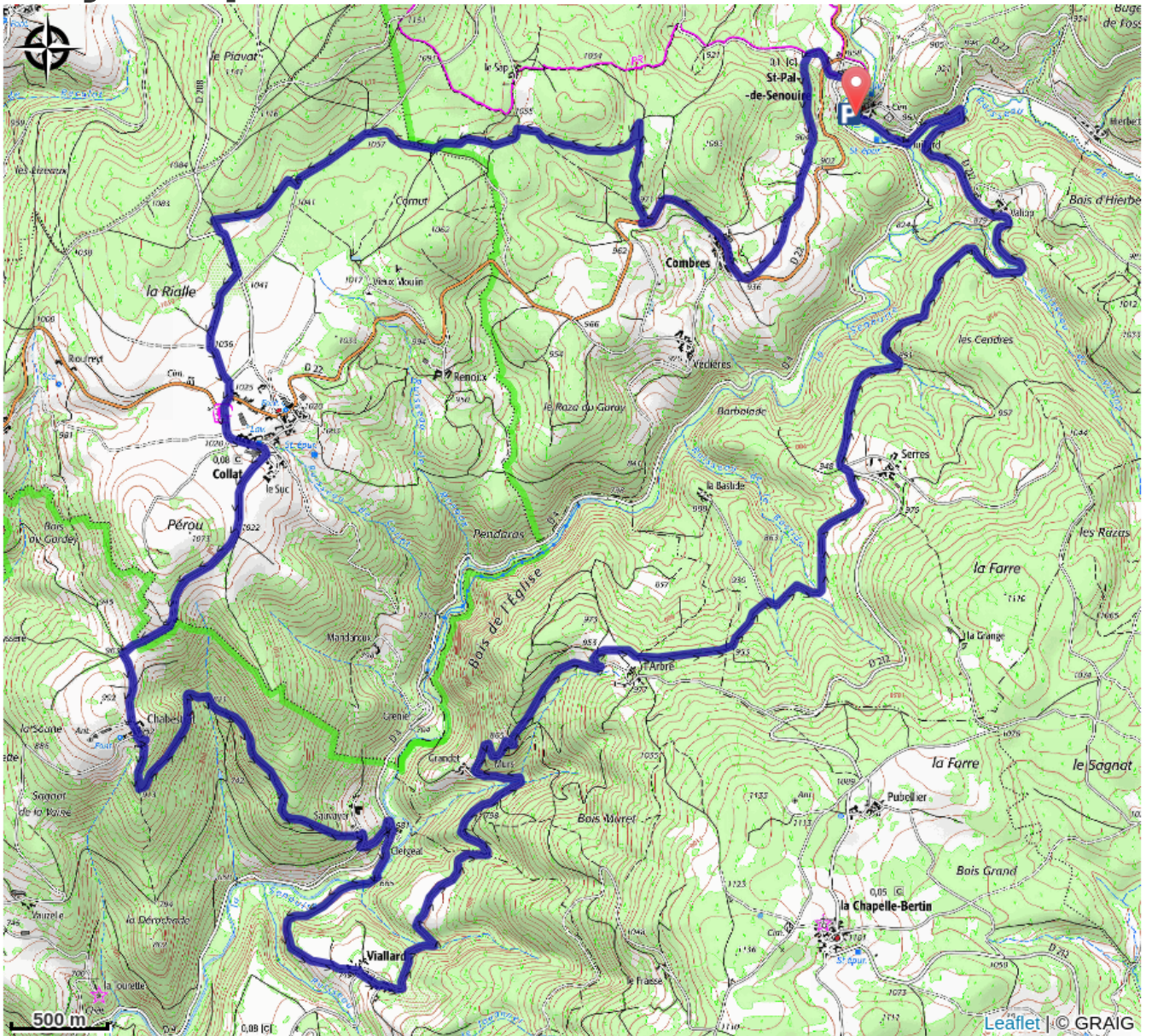
4. Chapelle-Bertin

Altimetric profile



Min elevation 666 m Max elevation 1064 m

On your path...



All useful information

How to come ?

Access

35 minutes au Nord-Ouest du Puy-en-Velay

Advised parking

Aire de camping-car, Saint-Pal-de-Sénoire