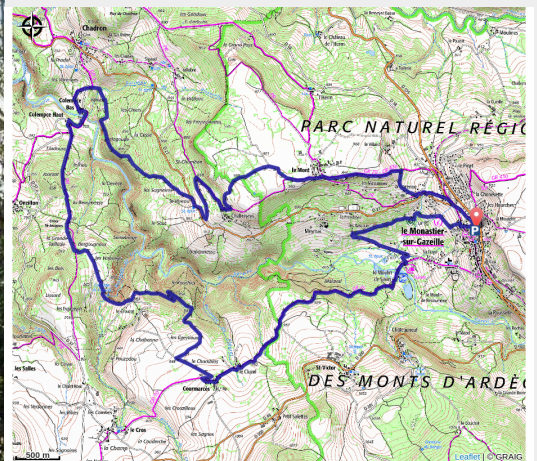


T09 - Les belvédères de la Gazeille

Montagne de Haute-Loire - Monastier-sur-Gazeille



Entre ciel et terre (Morgan Desfont)



Useful information

Practice : Trail

Duration : 2 h 45

Length : 19.9 km

Trek ascent : 675 m

Difficulty : Medium

Type : Loop

Trek

Departure : Le Monastier-sur-Gazeille

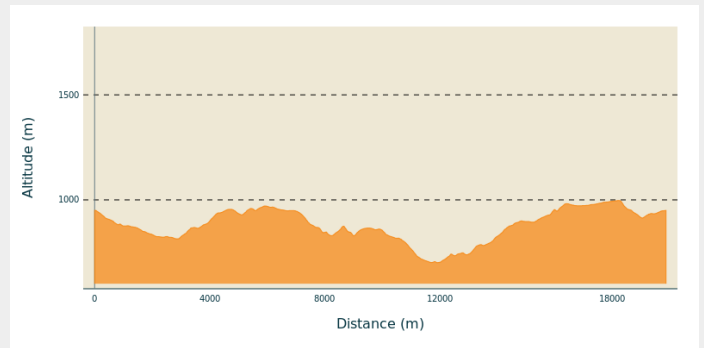
Arrival : Le Monastier-sur-Gazeille

Cities : 1. Monastier-sur-Gazeille

2. Saint-Martin-de-Fugères

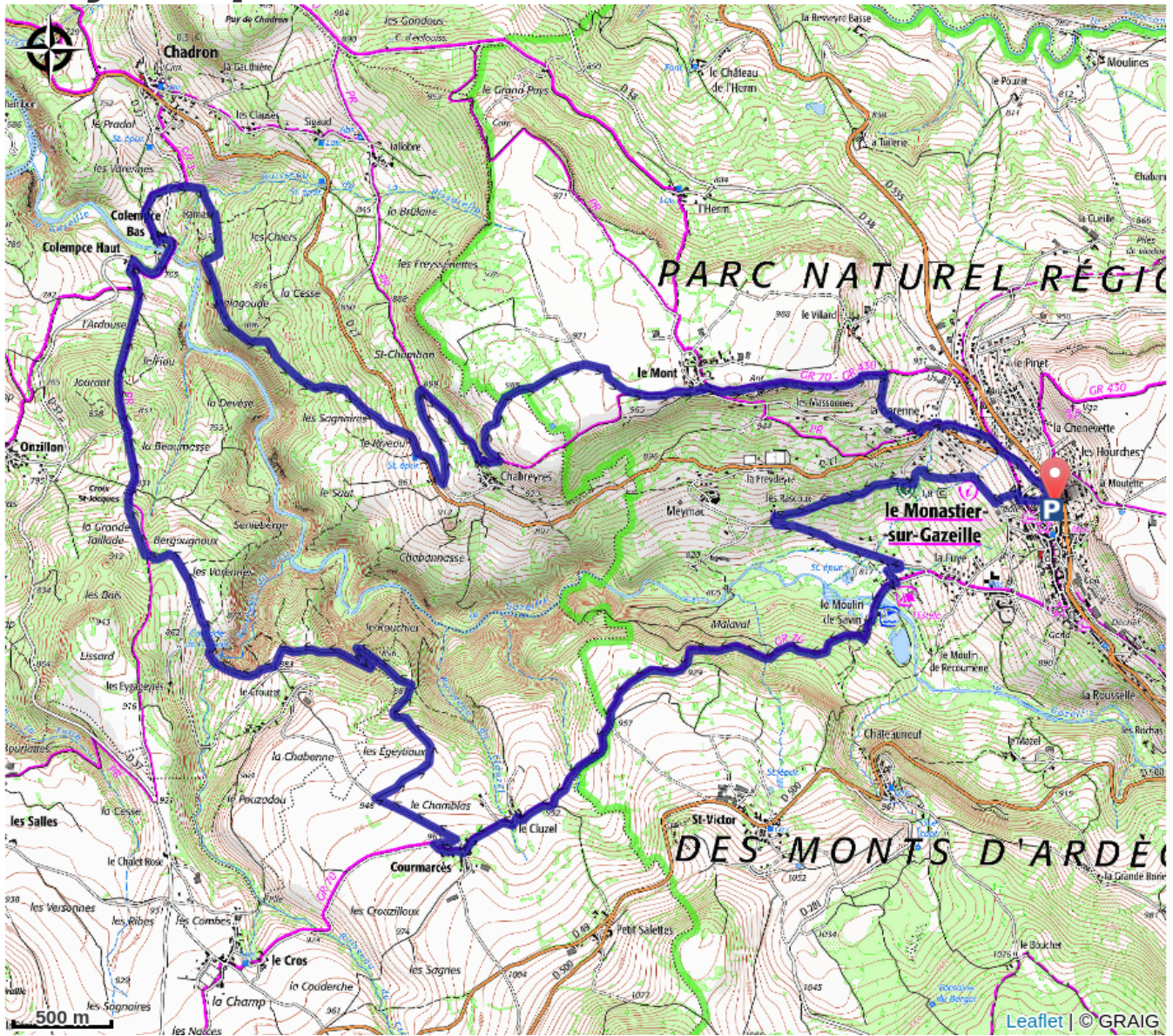
3. Chadron

Altimetric profile



Min elevation 701 m Max elevation 997 m

On your path...



All useful information

How to come ?

Access

25 minutes au sud du Puy-en-Velay